

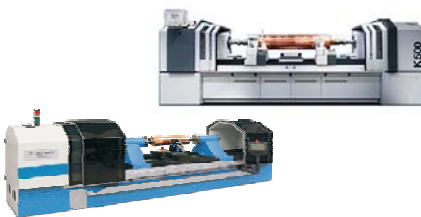
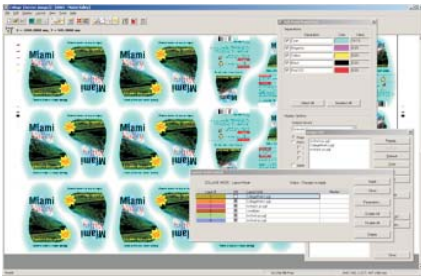
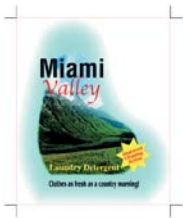
# Collage

Layout System

The Collage Layout System is a flexible, efficient system for the creation of complex cylinder layouts for packaging printing. Regardless of the output devices used – Gravostar, Laserstar, or Helio engraver – Collage is the only layout software needed.

Collage provides the ultimate in flexibility. Create the job and decide what output device to use at the last minute. And only Collage provides the choice of splitting the job: engrave some cylinders on a Gravostar and some on a K500<sup>(1)</sup>.

Collage includes a wealth of functions and tools. A few special modules are also available: K500 output; CCS Archive Reader and Gravo Archive Reader to convert legacy jobs.



## Image Input

- Native PDF workflow is supported
- PostScript, TIFF and even Handshake images can also be used
- One-up (single) images or fully-stepped-and-repeated images

## Job Creation

- Easily create the layout – set the steps and repeats; add gutters, bleeds; nest and stagger, and more. Layouts using multiple images, or mirrored or rotated images, is quickly done.
- Add job-identifying text or automatically incrementing label-identifiers.
- Enter the output parameters

## Productivity Tools

- User Preferences and Defaults Editor prevent errors in parameter entry
- Job Templates and Hot Folders for repetitive jobs
- Jobs created in legacy systems can be imported into Collage for output <sup>(1)</sup>.

## Quality Enhancement Tools

- Factory-supplied and User defined sharpness (edge enhancement) curves and gamma (gradation) curves
- Apply to entire job, single separations, an individual image, or any combination.

## Proofing

- Proof on-screen: view all separations in full color, a single separation, or any mix of separations.
- Zoom up to the pixel level to view actual engrave data. Measure density values, examine cell placement, even modify the result with the Cell Touch Up tool.<sup>(1)</sup>
- Print hard-copy to any Windows-compatible printer on your network. With the Collage Job Viewer, your customers can approve the job electronically

## Unique Options

- Match Helio allows cylinders engraved on a Gravostar to match cylinders engraved on a Helio engraver
- The real-time transcribe Image Process allows for engraving quality nearly equal to that of chemical etch or laser.<sup>(2)</sup>
- Collage is designed to work seamlessly in a fully-automated line. Cylinder parameters set in the Collage job are passed to the automated system.

## Output

- Gravostar engravers
- K500 and K50 engravers, now including support for HelioDisk v4 and v5 <sup>(1)</sup>
- DTG-controlled engravers
- Laserstar devices



### **Additional Tools**

- The Gamma Curve Editor, Sharpness Editor, and tranScribe Filter Editor allow you to go beyond the factory-supplied curves to create curves for your specific needs.
- The Ink Volume Calculator, the Archive Manager, the Hot Folder Editor, and others are also included.

### **Flexible System Architecture**

- The Collage Layout System consists of a Linux Server for file storage and fast image processing, and one or more Windows clients.
- The Collage-S Layout System combines the server and the client on a single Windows computer.
- The integrated JawsRIP can reside on the Collage client computer or can be loaded on a dedicated computer.
- Collage computers can be networked with design computers (Macintosh, Esko, etc.), printers (NovaJet, HP, etc), and the output devices.
- The Archive Manager allows you to easily share jobs and files (such as gamma curves and tranScribe filters) with other Collage Systems anywhere in the world, via CD/DVD or internet.

#### *Notes:*

All functions listed require software version 3.1 or higher.

(1) Requires 3.1.19 or higher and optional Helio output license

(2) Requires optional tranScribe engraving head

A RTI (Real Time Interface) engraver controller is required for output to Gravostar Engravers (included in Gravostar HS).

**Daetwyler R&D**

Daetwyler R&D Corporation  
2133 Lyons Road  
Miamisburg, Ohio 4532 USA  
Phone: (937) 439 1582  
sales@daetwyler-rd.com  
www.daetwyler-rd.com

**Daetwyler**  
Graphics

Daetwyler Graphics Flugplatz  
CH-3368 Bleienbach  
Switzerland  
Phone: +41 62 919 3737  
graphics@daetwyler.com  
www.daetwyler.com