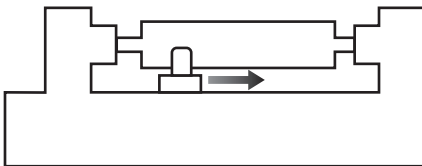


VISTA II

Cell Sensing System

Productivity Benefits

Regardless of whether your Gravostar is part of a fully-automated line, is automated but not part of an engraving line, or is not automated at all, VISTA II will improve production.

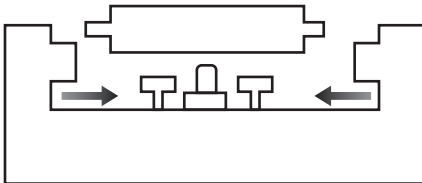


Fire-and-Forget

The GS HS or GS 827 is not automated.

1. The operator loads the cylinder.
2. The operator positions carriage for test cut.
3. The operator hits "Go".
4. Vista II performs test cuts. The job automatically starts after successful test cuts.

Benefit: The operator does not have to wait for test cuts to be completed, so he can move the carriage to job start location.

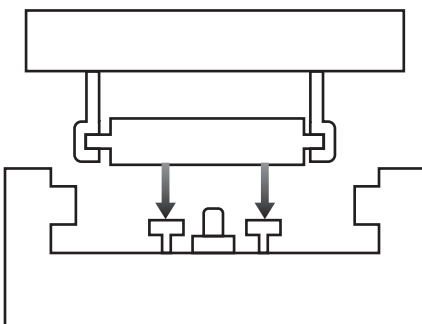


Drop-and-Go

The GS HS or GS 827 is automated.

1. The operator places the cylinder on the supports.
2. The machine grabs the cylinder, positions carriage for test cut, and engraving begins.
3. Vista II performs test cuts. The job automatically starts after successful test cuts.

Benefit: The operator can immediately move on to other tasks after step 1.



Lights-Out

The GS HS is part of a fully-automated engraving line.

1. Maintain processes

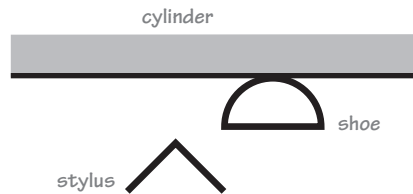
Cylinder Birth Certificates

Setup images are automatically archived over the network. Information includes screen, angle, stylus angle, stylus number, engrave time. Images include stylus profile, and cell information.

VISTA II

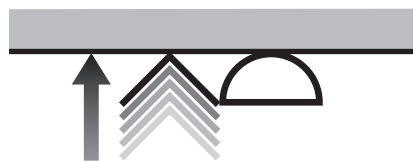
Cell Sensing System

Tip Calibration



After a new stylus is inserted, the automatic Tip Calibration procedure starts.

Typically, the shoe touches the cylinder but the stylus tip is not in the right position.



The stylus is automatically moved to the correct position against the cylinder.



When the shoe and stylus are in the optimum position, engraving begins.

All Gravostar HS and Gravostar 827 Vista engravers can be upgraded to Vista II



Ohio Gravure Technologies Inc.
2133 Lyons Road
Miamisburg Ohio 45432 USA
Phone: (937) 428 1700
Email: sales@OhioGT.com
Web: www.OhioGT.com