

GRAVOSTAR 857

The Low Cost Alternative

Step Up a level

The GRAVOSTAR 857 is MDC's latest engraver and brings low cost to advanced engraving technology. It is a perfect solution for companies with smaller budgets. Not only does the GRAVOSTAR 857 bring new technology and improved engraving quality, the GS 857 system includes a Linux RTI engrave controller to offer a total engraving package.



The GRAVOSTAR 857 Touchscreen Display (above) and Operator Interface (right)

Field Proven Controls

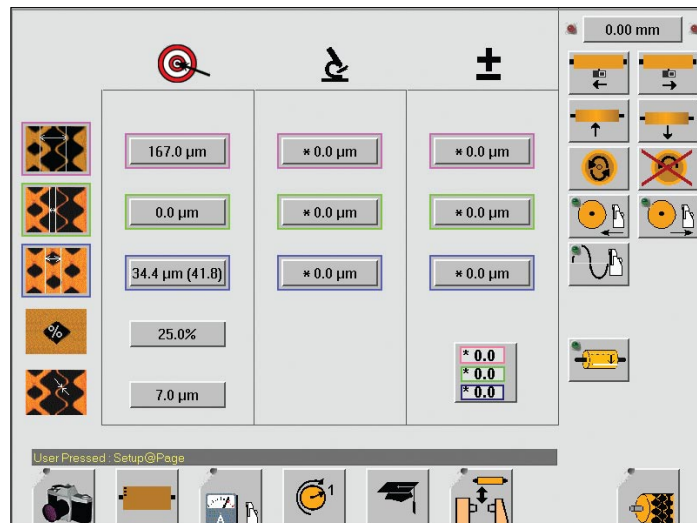
The GS 857 uses the established electronics and control package of the GRAVOSTAR 850 and 22D. The operator interface is a touchscreen panel found on the carriage, beside the engrave head, where virtually all operator activity is centered. The panel doubles as a display for the integrated microscope.

The GS 857 engraver has a long list of features to improve print quality and operator efficiency. A Multi-frequency VISION 2 PLUS engraving head equipped with the VISTA® Cell Measurement System is standard equipment. Also included are Midtone Correction, advanced hysteresis control, and the EasyCell® Calibration System, for fast, direct engrave head setup.

Now with greater depth at the highest engraving rate!

All electronics are located on the GS 857 bed, creating a smaller footprint. The electronics include a servo-controlled carriage drive for greater accuracy and the latest engrave head technology. The engrave head advances allow you to take advantage of MDC's VISION line of multi-frequency heads. This means that one head can perform both traditional or tranScribe engraving (option), without swapping heads.

To minimize costs, the GS 857 uses both new and OEM refurbished mechanical parts. All refurbished parts are thoroughly cleaned and inspected to meet Daetwyler's stringent specifications and ensure excellent engraving quality.



ENGRAVING

Daetwyler



GRAVOSTAR 857

Low Cost Alternative

Technical Information

- Recommended screen range:
31.5 l/cm to 200 l/cm
- Screen angles
30° to 60° in 0.01° increments
- Multi-tune *VISION 2 PLUS* Engrave Head with electronic feedback to ensure optimum engraving results:
NEW! – 5,500Hz for cell depths up to 60μ
– 4,500Hz for cell depths up to 65μ
– 2,000Hz for cell depths up to 90μ
- Range of stylus angles:
90°, 100° to 145° in 5° increments
- Download job specifications / cell sizes from engrave controller
- Linux RTI Engrave Controller with JAWS RIP (requires option on Collage layout system)
- Touchscreen LCD for machine control and cell display
- Integrated on-head microscope with *VISTA*® cell measurement software
- Direct cell-size entry with the *EasyCell*® Calibration System with learning ability
- Midtone Stylus Correction
- Job selectable spiral or step-over engraving
- Pause, inspect, and restart engraving with no quality loss
- Automatic lifting / lowering of engraving head protects diamond stylus from damage
- Digitally displays axial position of engrave head
- Circumferential image start for registering cylinder removed and re-inserted into engraver
- Fiber-optic communications with data verification
- Servo controller carriage motion for greater accuracy
- Vacuum upgrade
- On-board diagnostics
- Cylinder fixturing
for Shafted Cylinders
– 3- or 4-jaw chuck (drive-side) with live-center tailstock
– 3- or 4-jaw chuck with bearings
for Shaftless Cylinders
– 3- or 4-jaw chuck (drive-side) with cone and a tailstock with spindle and cone

Options

- *tranScribe*® Engraving System
- High Output 130 Engraving Head for cell depths up to 130 microns
- Heavy-duty tailstock with 3- or 4-jaw chuck
- Arbors with cones
- Multi-ratio cylinder drive – Get the most from your investment by extending the cylinder rotational speed range to enable the greatest flexibility of applications. The multi-ratio drive covers fine (*Transcribe*) screens on large diameter rolls or the fast rotation of coarse screens on small diameter rolls.

Daetwyler includes a full warranty on the *GRAVOSTAR 857* including six (6) months on electrical/electronic parts and 12 months on mechanical parts.

For more information about the *GRAVOSTAR 857*, visit our website at: www.daetwyler-rd.com

Please refer to the *GRAVOSTAR 857* Cylinder Specifications sheet for additional information on machine capacity.

All electronics mount on-board the GS 857 engraver.



©2006-2009 MDC Max Daetwyler AG. All rights reserved. MDC reserves the right to change any specification herein without prior notice. *VISTA*, *EasyCell*, and *tranScribe* are registered trademarks of MDC Max Daetwyler AG.



Daetwyler R&D Corporation
2133 Lyons Road
Miamisburg, Ohio 45342

Phone: (937) 439 1582
Email: sales@daetwyler-rd.com
www.daetwyler.com
www.daetwyler-rd.com